



Hawke's Bay Classic Motorcycle Club Presents the 19th 2022 National Classic Motor Cycle Rally – 16 -17-18 September

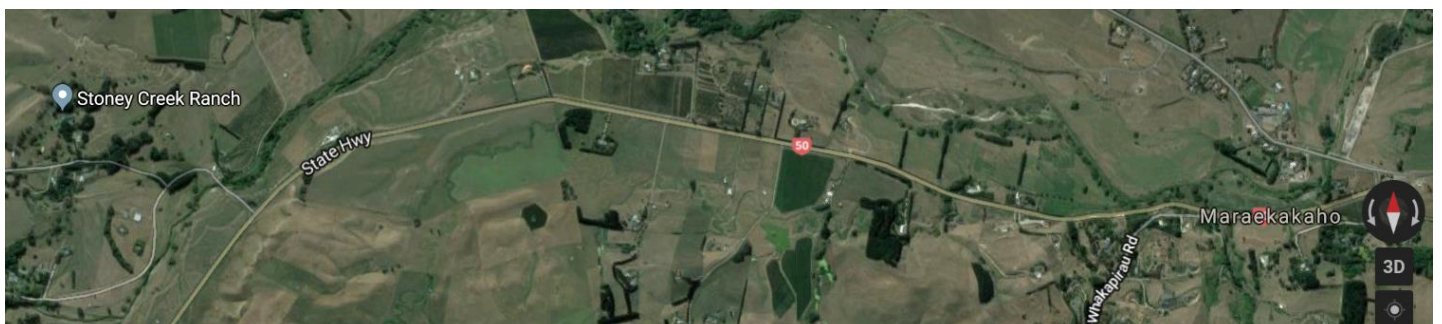
Information sheet

- Venue – Stoney Creek Ranch, 70 Tait Road, Maraekakaho 4171
- Rally packs and registration in the main hall from 2pm Friday 16th
- Friday afternoon, set up your accommodation. Bar and nibbles from 4pm
- Friday evening, drinks and merriment in the main hall. Catered meal from 6.30pm
- Saturday breakfast from 7.30am. Bike judging and display from 8.30am. Ride briefing at 9.30 and leave at 10.00. A great ride south and a great lunch . Return to Stoney Creek, Bar and nibbles from 3.30pm. Prize giving and a great evening dinner at 7pm.
- Sunday breakfast from 8am. Farewells and departure
- Accommodation is in 8-berth bunk cabins, each with bathrooms and toilets. One reserved for ladies only. Tents and campervans in the surrounding grounds. Limited power is available for campervans via extension cords. Porta loos provided for campers. Ladies shower in the Ladies bunk house. (NO PETS as there is stock in the adjacent paddocks).
- Prizes for:
 - Oldest motorcycle
 - Best 1939 and before: 1940 to 1949, 1950 to 1959, 1960 to 1969, 1970 to 1979, 1980 to 1989 , 1990 to 1996
 - Longest ride to rally. The competing bike must be ridden this distance
 - Best overall motorcycle
 - President's choice
 - Hard luck
 - Bonus prizes for any 100-year-old motorcycles

The rally has professional catering which makes it possible for our members to relax and enjoy your company. The Club-run licensed bar will ensure value for money.

Contact

George Lane 0272321959 etr.george@gmail.com



*Hawke's Bay Classic Motorcycle Club Incorporated
PO Box 2417, Stortford Lodge, Hastings*